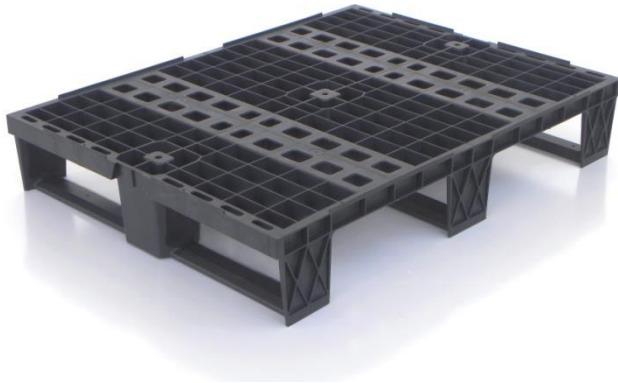


Data Sheet

800x600 Performance



Tecnical data	cod. 0806PERF
Dimensions mm. (L x W x H)	800x600x135
Height mm.	135
Fork clearance mm.	105
Topdeck mm.	30
Weight kg.	3.7
Dynamic loading* kg.	400
Static loading* kg.	1200
Nestable	no
Pallets per stack Pcs.	28
Stack height for trucks mm.	2500
Stack weight kg.	104
Trackload quantity Pcs.	1568
RFID option	Si
Material	Recycled polypropylene
Operating range temperature	Recycled polypropylene
Standard color (any color on demand)	Black-gray

* depending upon type of loading.

Guidelines values were performed in accordance with ISO 8611-1: 2011. We recommend you always check your load conditions and pallet storage, considering environmental factors such as the storage time and the storage area temperature. Imball Nord Srl reserves the right to change any of the stated information without prior notice.

0806PERF is non FDA. Use with barrier materials for direct food contact.