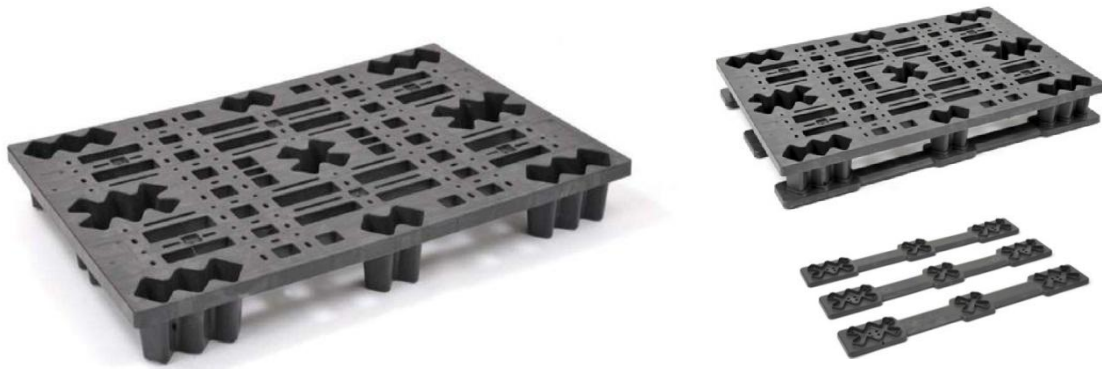


Data sheet

800x1200 Performance



Tecnical data	cod. 1208PERF
Dimensions in mm (L x W x H)	1200x800x134 (151**)
Height in mm	134 (151**)
Fork clearance mm.	100 (117**)
Topdeck mm	34
Weight kg	8,90
Dynamic loading* in kg	1500
Static load* in kg	4000
Nestable	Yes
Pallets per stack Pcs.	50
Stack height for truck mm	2500
Stack weight kg	445
Track load quantity Pcs. (mt. 13,60)	1650
RFID option	Si
Material	Polypropylene
Temperature range	-20°C +60°C
Standard Color (any colour on demand)	Grey

* depending upon type of loading

** whit plastic bars

Guidelines values were performed in accordance with ISO 8611-1: 2011. We recommend you always check your load conditions and pallet storage, considering environmental factors such as the storage time and the storage area temperature. Imball Nord Srl reserves the right to change any of the stated information without prior notice. Logypal is non FDA.

Use with barrier materials for direct food contact.